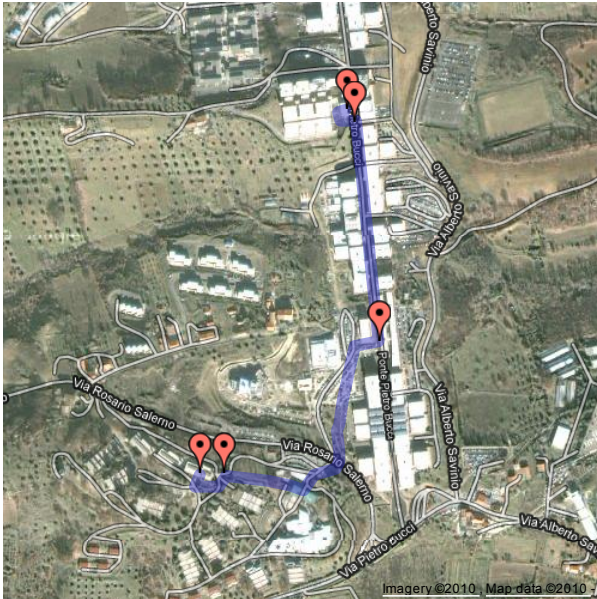


CILC 2010 Walking Indications

[Click here to flip through path descriptions](#)



[Socrates-
conference
shortest](#)

[Socrates-
conference
using shuttle](#)

[Socrates-
conference
minimum sun
exposure](#)

[Socrates-
Quattromiglia](#)

Exiting Socrates, head downhill turning left twice. Take the stairs to your left down or follow the street all the way to the fountain. If you took the stairs, turn left once you reach the main street and walk until you reach the fountain.

Cross the street and enter the park, keeping left. Head down and on towards a building with a glass/mirror facade, crossing a parking lot. At the building, walk towards the bridge and climb one or two flights of stairs to the lower or upper level of the bridge.

On the bridge head north until there is another building with a glass/mirror facade that extends over the bridge street. If you took the lower level of the bridge, this level ends right at this place, take the staircase to the upper level. Before passing under the building, turn left and right again onto a small square, the University Club entrance is on the right.

The walk will take 10-15 minutes.