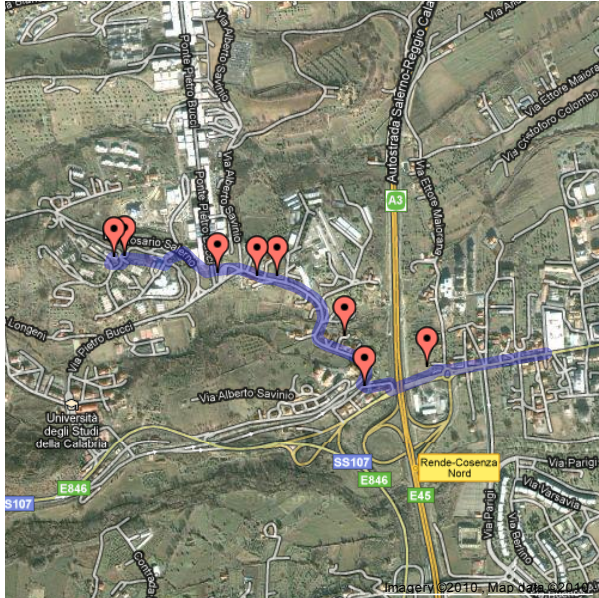


CILC 2010 Walking Indications

[Click here to flip through path descriptions](#)



[Socrates-conference shortest](#)

[Socrates-conference using shuttle](#)

[Socrates-conference minimum sun exposure](#)

[Socrates-Quattromiglia](#)

Exiting Socrates, head downhill turning left twice. Take the stairs to your left down or follow the street all the way to the fountain. If you took the stairs, turn left once you reach the main street and walk until you reach the fountain.

Cross the street and turn right, following the street downwards. As soon as you can, turn slightly left onto a footpath that takes you to a roundabout with a small monument in the middle. Take the opposite staircase down to the bus station and cross it, continuing straight.

Continue straight onto the street lined with bars and shops on both sides, and keep walking downhill.

Follow the street as it takes a right and then a sharper left turn. On the left there is a bakery which is open 24h per day (except for Saturday evenings).

The street takes another right turn and immediately after it, there is an old, unused railway track on the left hand side. Take the footpath that crosses the track, head down the street and turn left.

You are now on a main road, restaurants Nettuno and Lisandrone would be a couple of meters to the right. For Quattromiglia, turn left, passing under the A3 motorway. You get to a very large roundabout, with a McDonalds on the left. After the roundabout continue in the direction in which you approached it in order to get to a zone with many restaurants, bars and entertainment.

Depending on the destination, this will take 20-30 minutes. The described direction is downhill, going back might take longer.